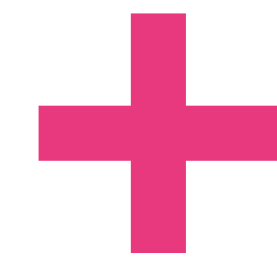




Christmas AI

CAROL SERVICE
21 DEC 2025

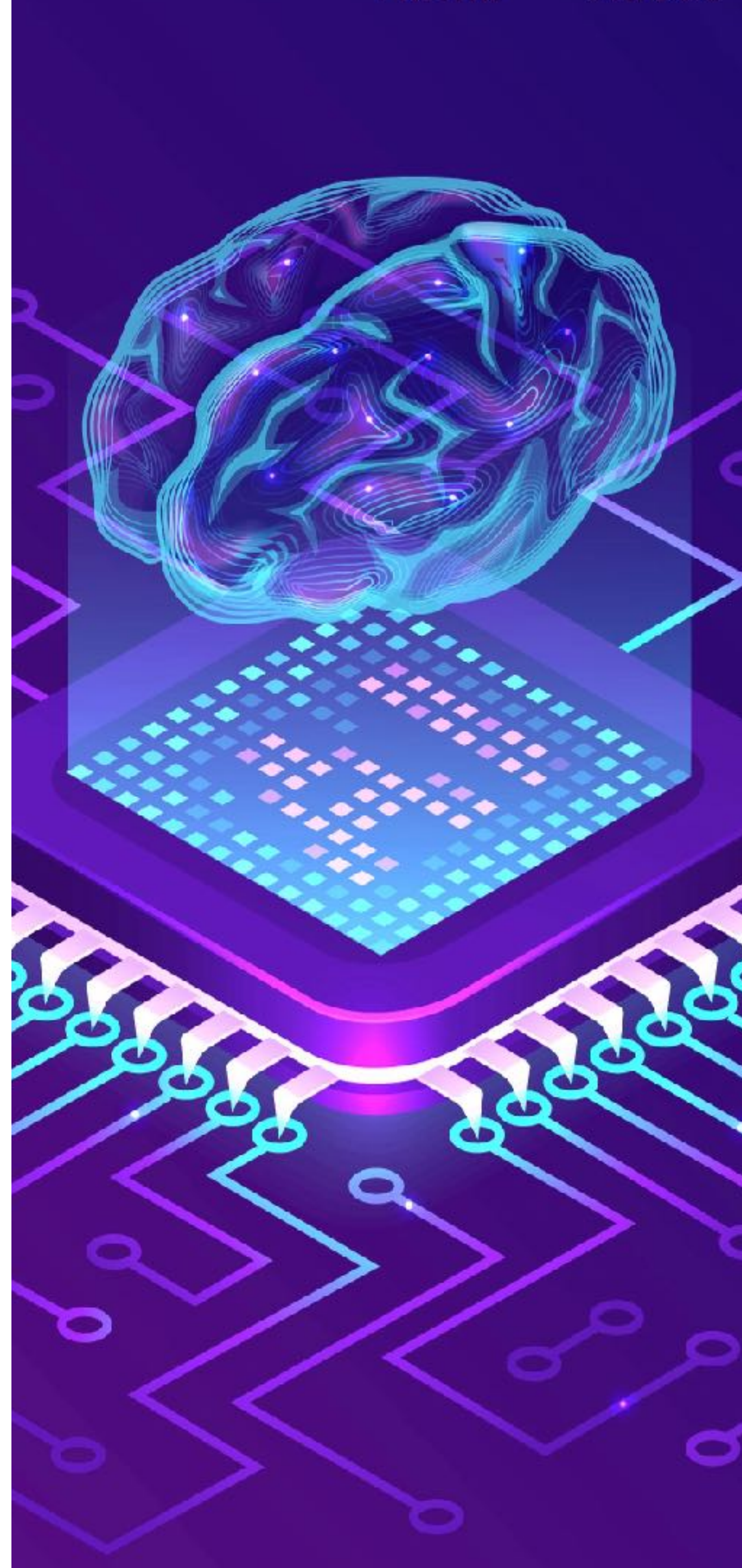


How AI
points us to
Christmas



DEFINITION

WHAT IS AI?

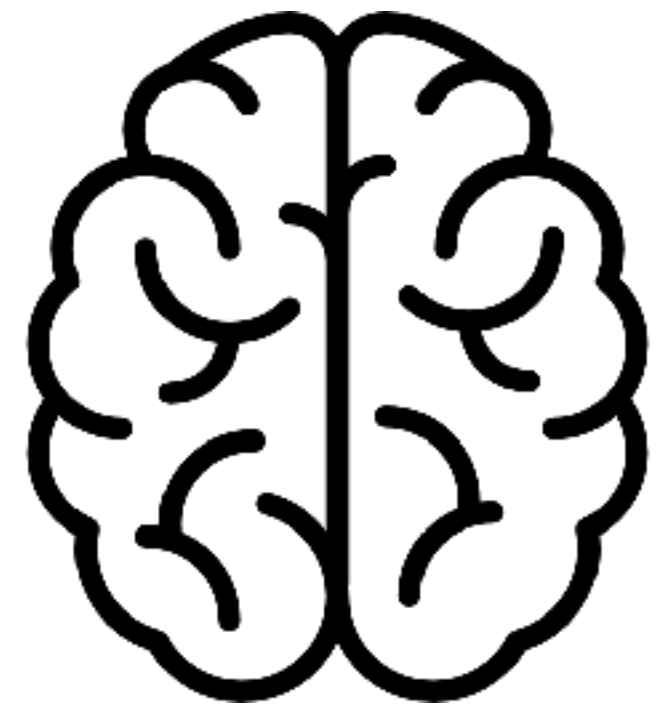


"A computer system which analyses billions of data points to simulate human learning, comprehension, problem solving, decision making, creativity and autonomy."



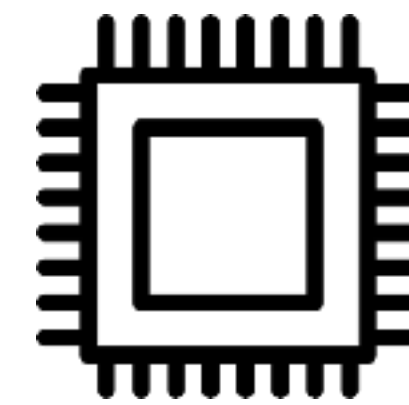


Human Brain



Billions of
interconnected
neurons

AI Microchip



Billions of
interconnected
transistors

NARROW/ WEAK AI

Simulates human intelligence

Discriminative AI

E.g. Medical
Diagnosis

Generative AI

E.g. Claude,
Midjourney, Suno

Different types of AI



GENERAL/ STRONG AI

Actually has intelligence

Does not exist

Scientists divided
if ever will

Realm of sci-fi

E.g. HAL, Skynet,
The Entity, AUTO

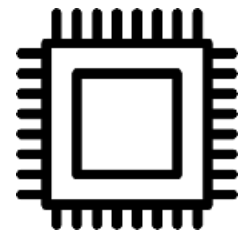
AI IN EVERYDAY LIFE: DRIVERLESS TAXI





AI IN
EVERYDAY
LIFE:
MUSIC

BREAKING
RUST

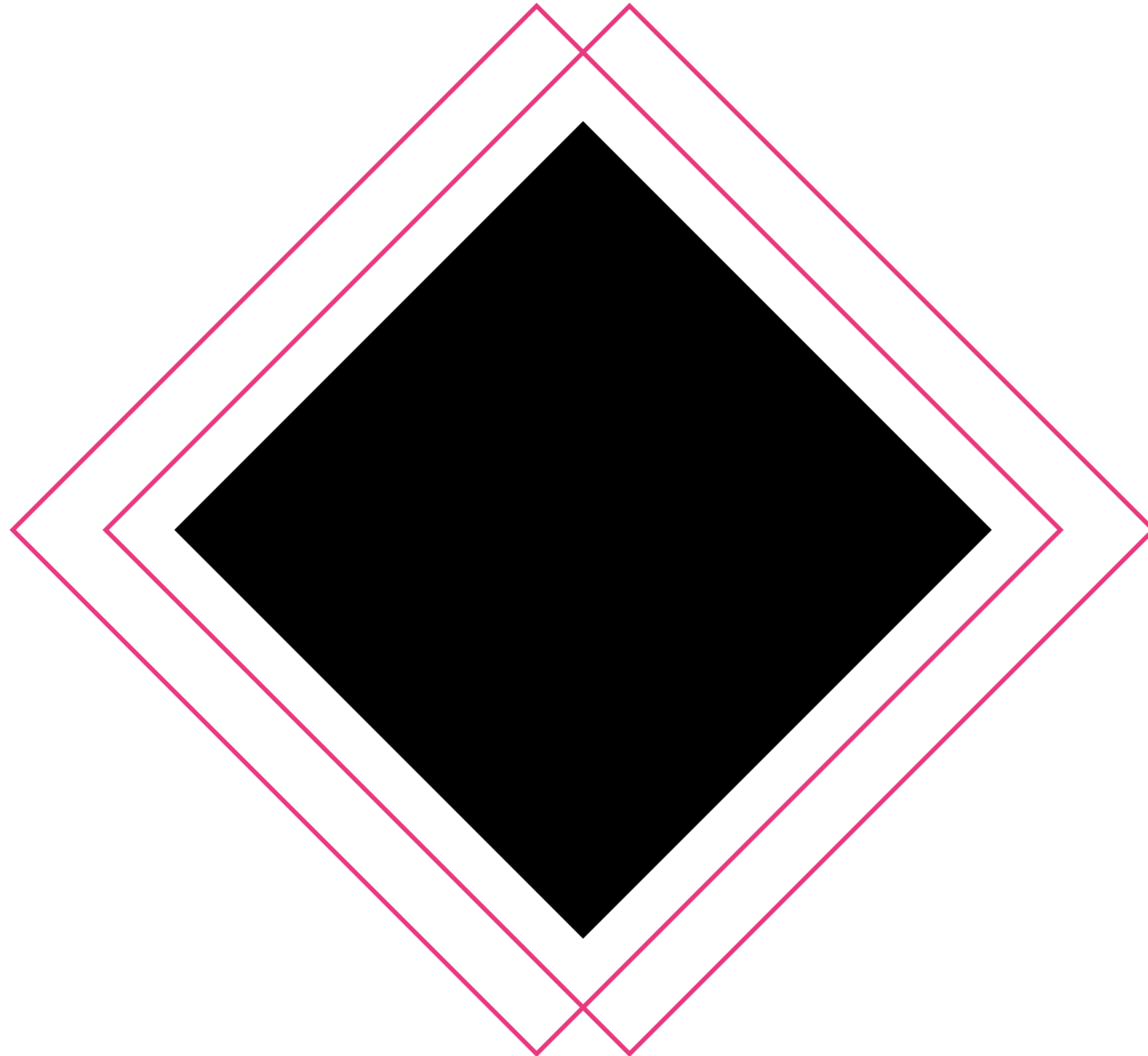


AI IS **VERY** **POWERFUL**

It can write essays, build websites, write novels, produce images and videos, have conversations, write computer code, detect cancer, speed up medical research...



**Google
DeepMind**



AlphaFold





AI as saviour

Transhumanism

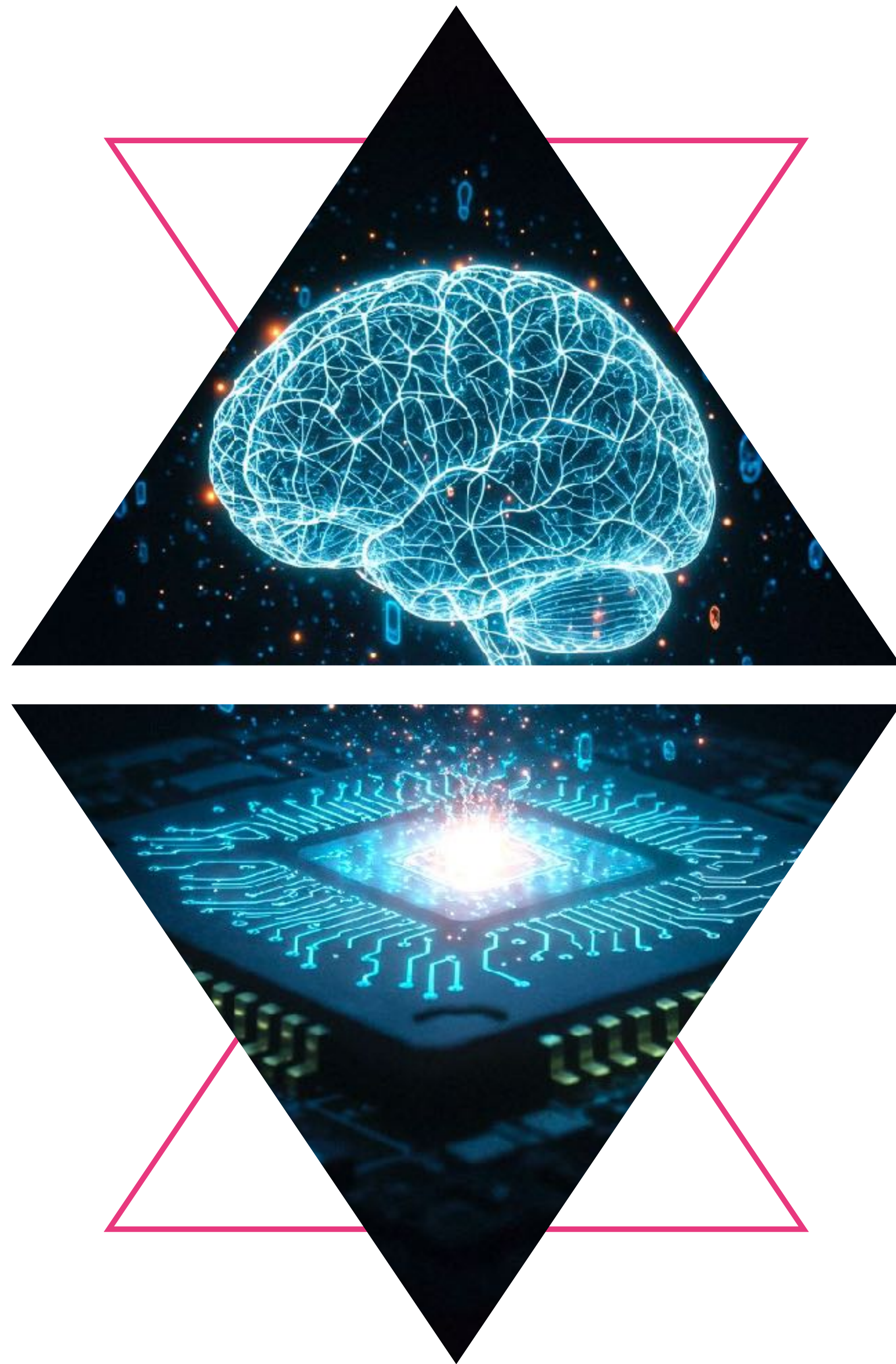
A theory that the human race can transcend its current mental and physical limitations, especially by using science and technology.



GOD/AI

- ▶ Omniscience/**Knowledge**
- ▶ Omnipotence/**Power**
- ▶ Omnipresence/**Everywhere**
- ▶ Creation/**Generation**
- ▶ Wisdom/**Guidance**





AI Problems



01

AI Problems


**EROSION OF
TRUTH/TRUST**

02

AI Problems

AI SURVEILLANCE



The background of the slide is a dark, abstract composition. On the left side, there is a diagonal band of glowing blue and orange lines, resembling a stylized circuit board or data flow. Overlaid on this are various binary strings (0s and 1s) in different colors and sizes, some appearing to float or be part of the circuitry. The right side of the slide is a solid white background, separated from the left by a diagonal line. The title text is positioned on the white background.

03

AI Problems

GPT AND COPYRIGHT

04

AI Problems

MISUSE OF AI



The background features a vibrant, abstract composition. On the left, a dense cluster of multi-colored streaks (purple, blue, green, yellow, and red) radiates from a central point, resembling a cosmic explosion or a high-speed data visualization. Several thin, bright pink lines cut across the white background, adding a modern, geometric feel. The overall aesthetic is futuristic and dynamic.

05

AI Problems

**SPEED OF
DEVELOPMENT**

06

AI Problems

SLAVE OR MASTER



07
AI Problems

DEHUMANISATION



08
AI Problems

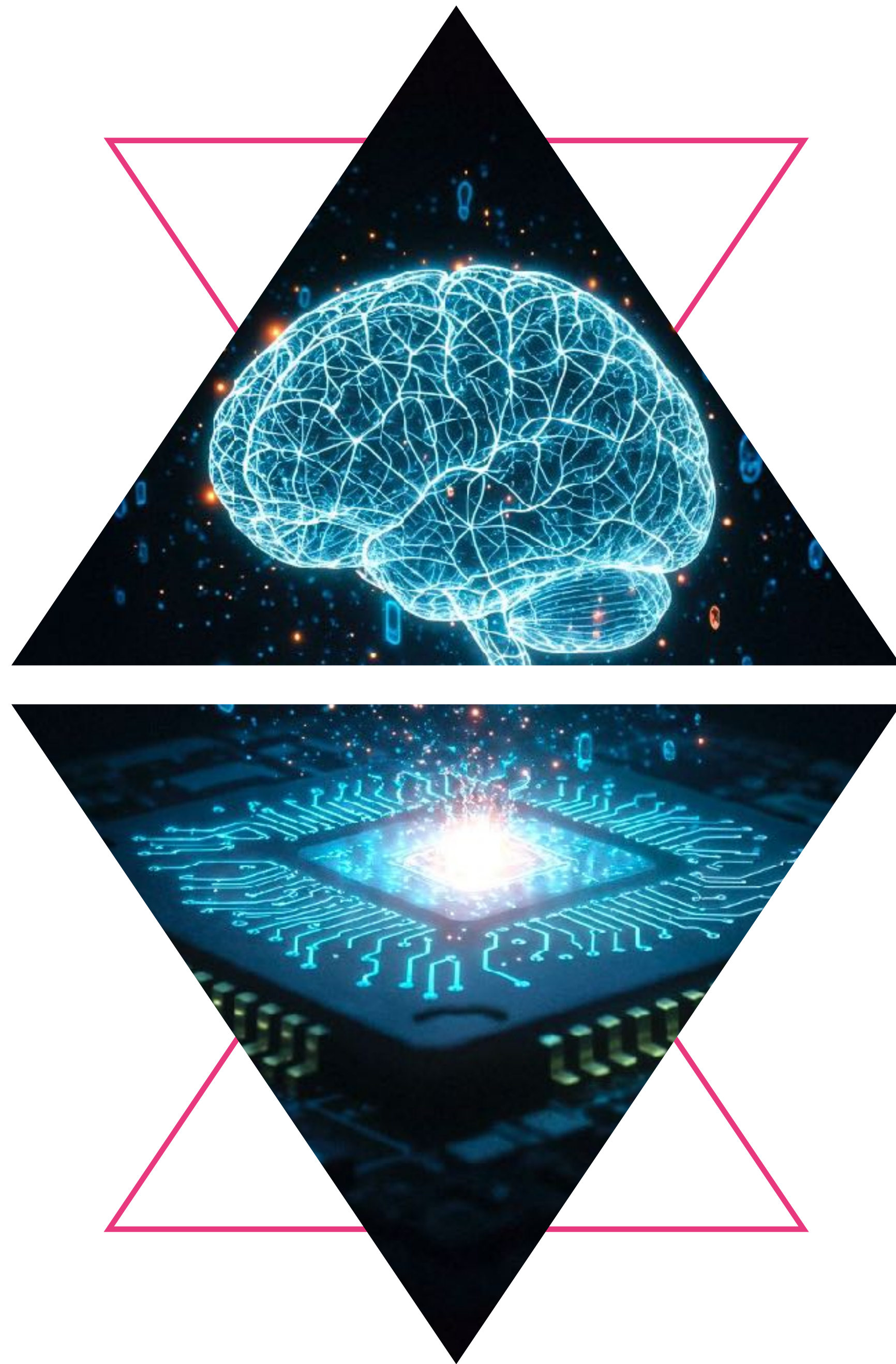
DEPENDANCE ON AI





09
AI Problems

ENERGY USE

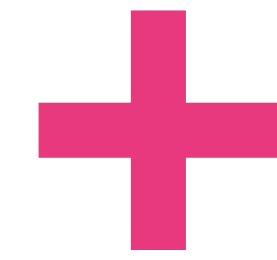


AI *Saviour?*



Christmas AI

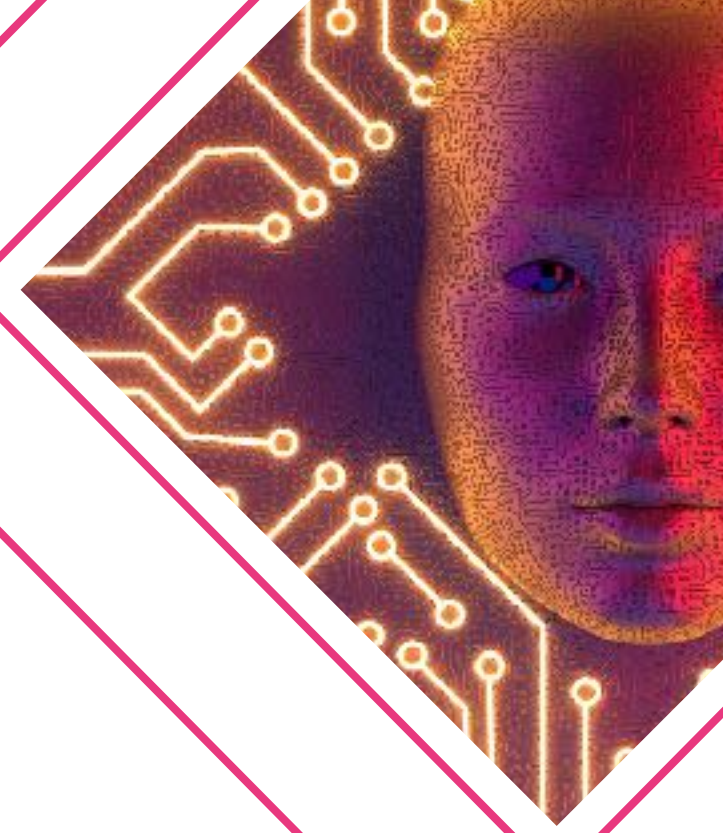
CAROL SERVICE
21 DEC 2025



How AI
points us to
Christmas



Humans $\xrightarrow{\text{Salvation}}$ god-like AI



Human $\xleftarrow{\text{Salvation}}$ God

Love

Luke 2:10-11a "But the angel said to them, "Do not be afraid. I bring you good news that will cause **great joy** for all the people. Today in the town of David a Saviour has been born to you..."

WHY WE
NEED JESUS
AND NOT AI
FOR OUR
SAVIOUR



WHY WE
NEED JESUS
AND NOT AI
FOR OUR
SAVIOUR

Forgiveness

Luke 1:68-69, 77 "Praise
be to the Lord, because

He has raised up a King of
salvation for us to give his
people the knowledge of
salvation through the
forgiveness of their sins."



WHY WE NEED JESUS
AND NOT AI FOR
OUR SAVIOUR

Incarnate

Luke 1:35 "The angel
answered, 'The Holy Spirit
will come on you, and the
power of the Most High will
overshadow you. So the
holy one to be born will be
called the **Son of God.**"





**Which
saviour will
you turn to?**



How AI
points us to
Christmas



The image features a white background with four thin, parallel pink lines in the corners, creating a modern, geometric design. Two lines are in the top right corner, and two are in the bottom left corner.

IMAGE CREDITS:
Freepik
www.freepik.com