

Argyle Community Church

All-age service

Whole Church Worship

→ July 2026





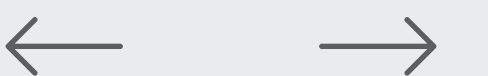
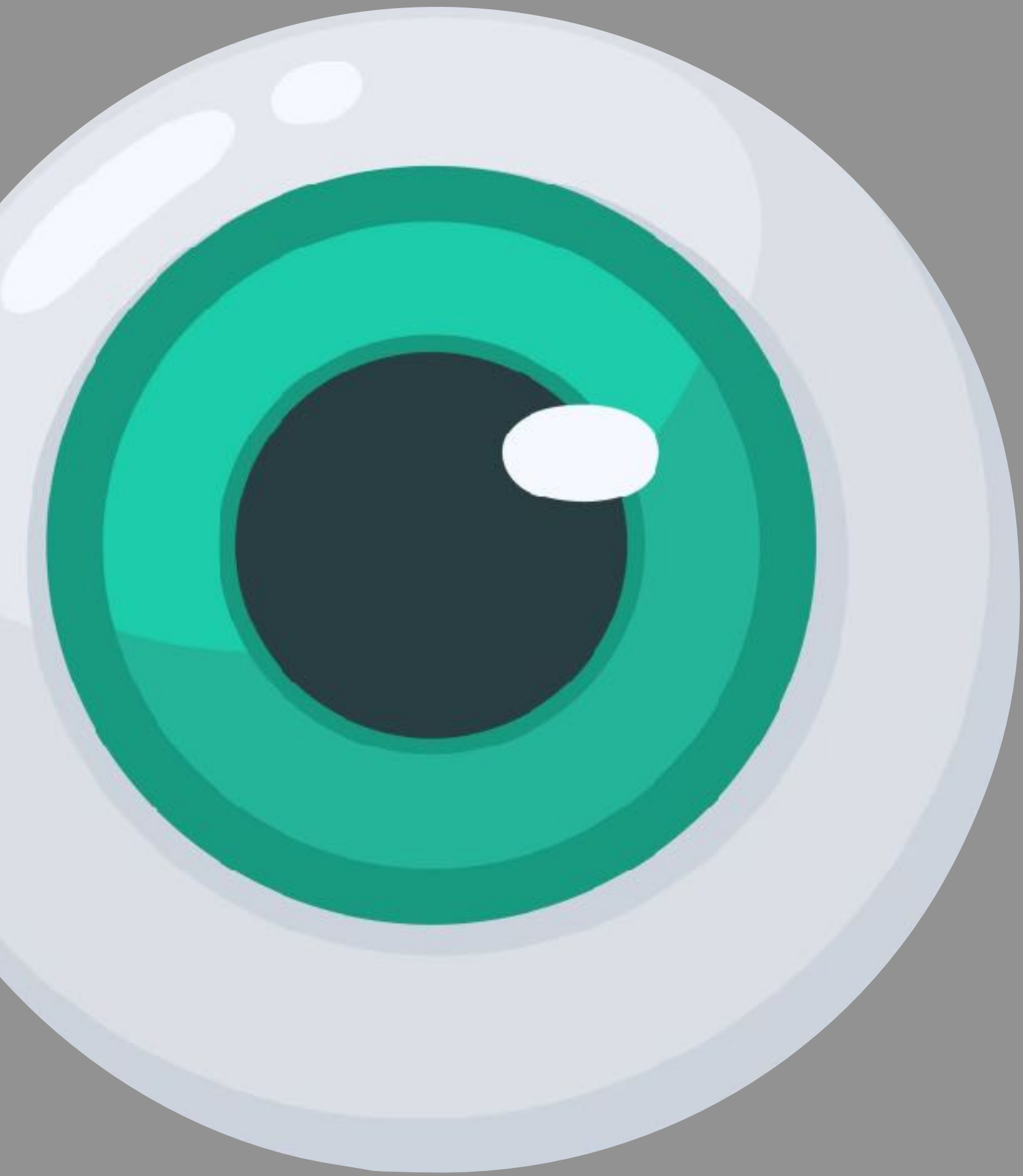
1 Corinthians 12:12, 27

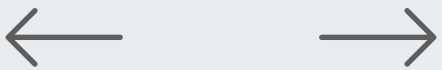
"12 Just as a body, though one, has many parts, but all its many parts form one body, so it is with Christ."

"27 Now you are the body of Christ, and each one of you is a part of it."

1 Corinthians 12:17

—
“If the whole body were an eye, where would the sense of hearing be? If the whole body were an ear, where would the sense of smell be?”





1 CORINTHIANS 12:15—16

"15 Now if the foot should say, 'Because I am not a hand, I do not belong to the body,' it would not for that reason stop being part of the body.
16 And if the ear should say, 'Because I am not an eye, I do not belong to the body,' it would not for that reason stop being part of the body."





Whole Church Worship

Diversity in worship

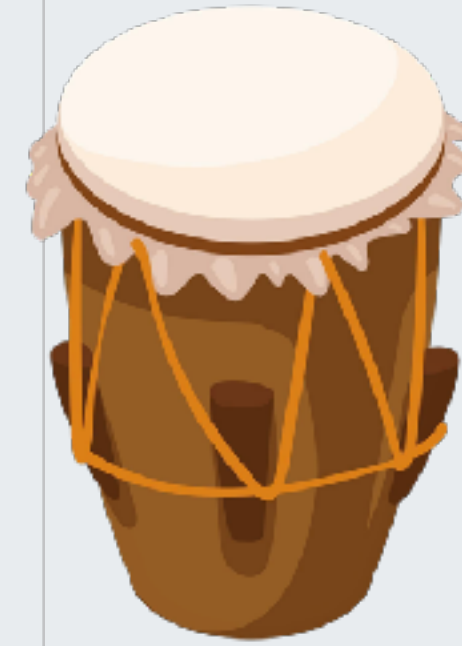
Is important. Different ways of worshipping are a good thing.



fun



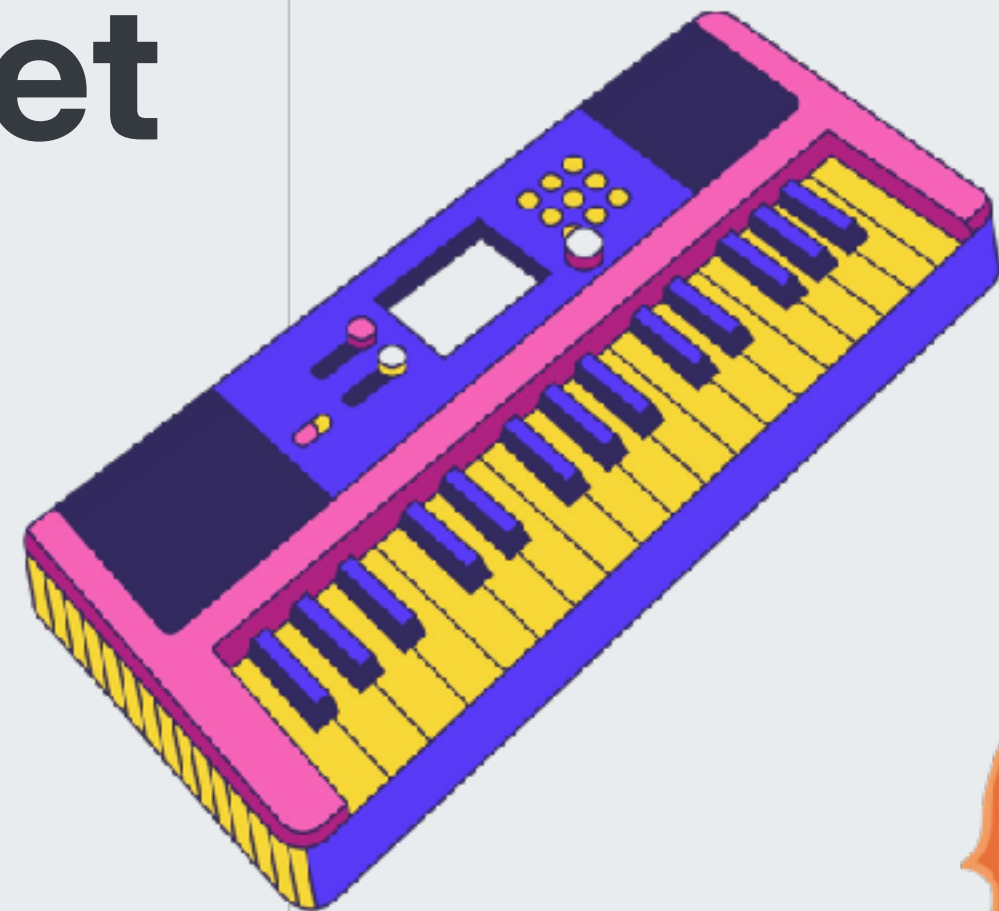
serious



spontaneous



quiet



music

prayer



planned

loud

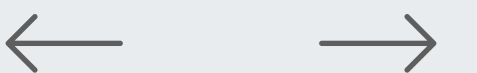


thinking

doing



feeling



Whole Church Worship

Diversity in worship is good!

